

**Maths In Motion**  
**SPACE**

# Workbook

Lesson 4: Galaxies

**To join in please bring:**

**A balloon, a marker pen, and elastic band**



# Size and distance

**Earth**

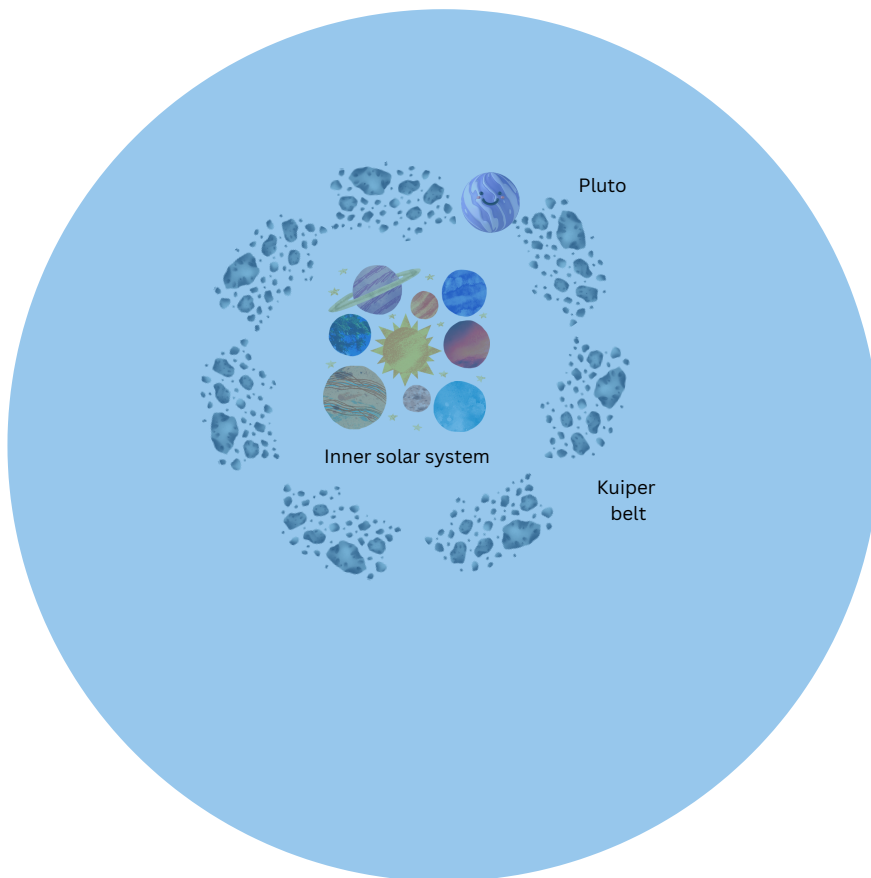


Our nearest  
neighbouring  
planet  
..... minutes  
away at light  
speed

**Venus**



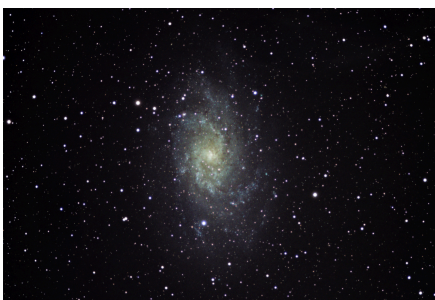
Our solar  
system is .....  
lightyears wide





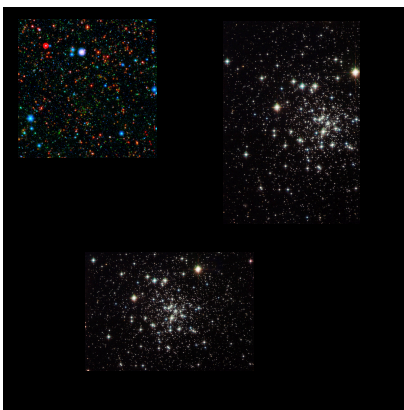
The closest star to the sun is ..... light-years away

Within 16 light-years there are ..... star systems (containing 60 stars)

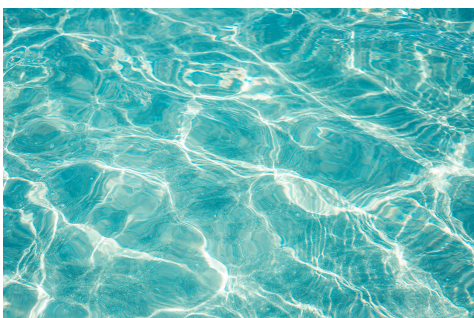


The Milky Way is ..... light-years wide

It contains 200 billion stars



Massive webs of superclusters make up about ..... % of the visible universe



The observable universe is about ..... light-years across

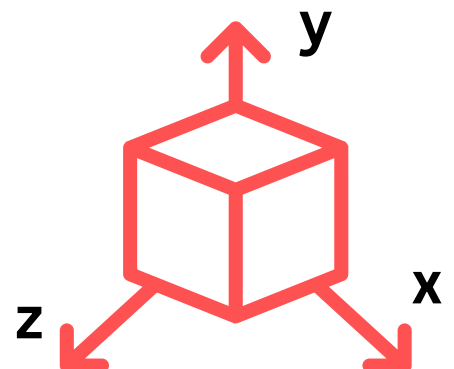
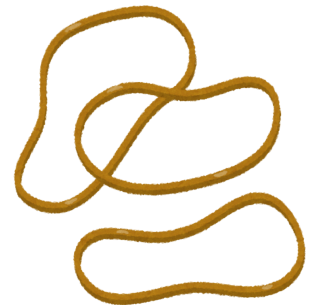
# Stretching



When you blow up a balloon, what do you notice?

# STRETCH

When you stretch an elastic band, what do you notice?



# At home challenge:



Explore the universe through Hubble's Cosmic Adventure.

This is a game from NASA, where you answer questions and get to explore the universe billions of lightyears away.

<https://science.nasa.gov/mission/hubble/multi-media/hubbles-cosmic-adventure/>