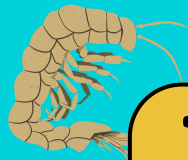




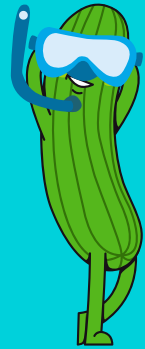
Joyfulmathswithruth

Maths In ~~Motion~~

The ocean



The Abyss



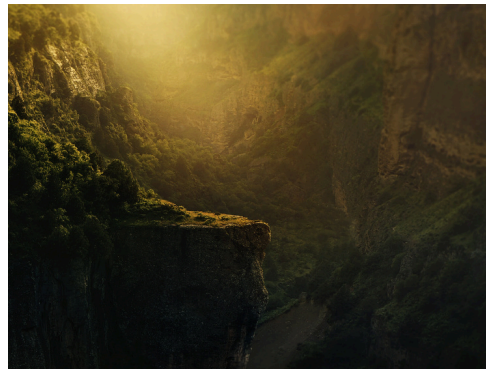
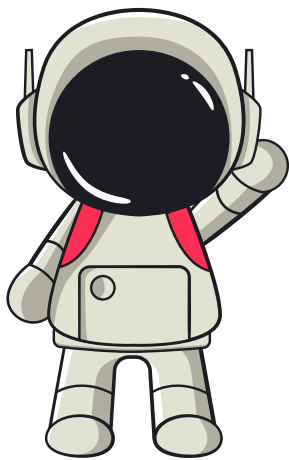
To join in please bring:



A plastic bottle, something sharp to make holes with (and an adult to help/supervise), some tape, a bowl, a jug of water, a ruler, pen, calculator

Something to think about:

More people have gone into space
then have gone to the Abyss.
Why do you think this might be?



Space for your
thoughts or a picture



The Abyss

The biggest environment on earth



1	2	3	4	5	6	7	8	9	10
11	12	13	14	15	16	17	18	19	20
21	22	23	24	25	26	27	28	29	30
31	32	33	34	35	36	37	38	39	40
41	42	43	44	45	46	47	48	49	50
51	52	53	54	55	56	57	58	59	60
61	62	63	64	65	66	67	68	69	70
71	72	73	74	75	76	77	78	79	80
81	82	83	84	85	86	87	88	89	90
91	92	93	94	95	96	97	98	99	100

83% of
the ocean

Space for your thoughts
or a picture



The Abyss

The biggest environment on earth



The Abyss
60% of the
planet surface



1	2	3	4	5	6	7	8	9	10
11	12	13	14	15	16	17	18	19	20
21	22	23	24	25	26	27	28	29	30
31	32	33	34	35	36	37	38	39	40
41	42	43	44	45	46	47	48	49	50
51	52	53	54	55	56	57	58	59	60
61	62	63	64	65	66	67	68	69	70
71	72	73	74	75	76	77	78	79	80
81	82	83	84	85	86	87	88	89	90
91	92	93	94	95	96	97	98	99	100

83% of
the ocean

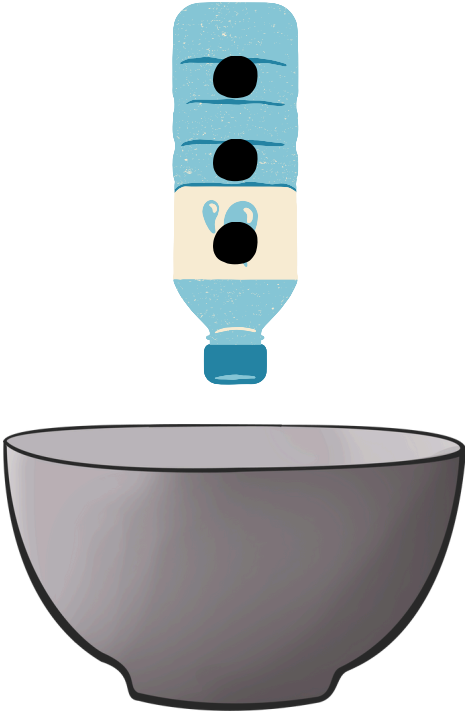
Space for your thoughts
or a picture



Pressure



What happens?
Why?



$$\text{Pressure} = \frac{\text{Force}}{\text{Area}}$$

Space for your thoughts
or a picture



Quiz

Circle your answer

1.

$$\frac{\text{Force}}{\text{Area}}$$

Force x
Area

Force -
Area

2.

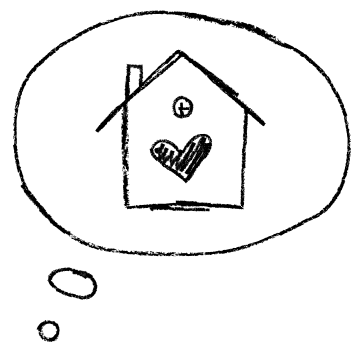
$$\frac{83}{100}$$
$$\frac{100}{83}$$
$$\frac{17}{100}$$

3.

Dark

Deep

Bottomless

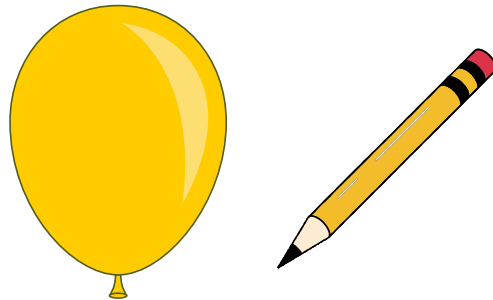


Explore at home:

Experiment with pressure!

Try this balloon experiment from BBC bitesize here:

<https://www.bbc.co.uk/bitesize/articles/zvdpf82#z3wnydm>



Choose an animal from the Abyss:

What adaptations has it had to make to live in these conditions?

A great example would be the Blob Fish - look at a picture of one on land, vs one in its natural habitat.



You can use the fact file to record these facts, either with writing or drawing. I would love to see what you do!

Joyfulmathswithruth

Joyful facts

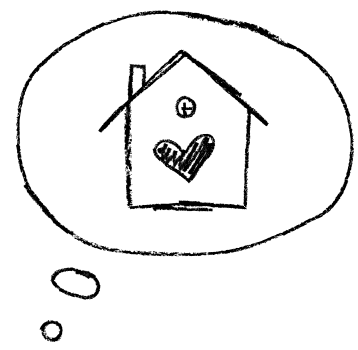
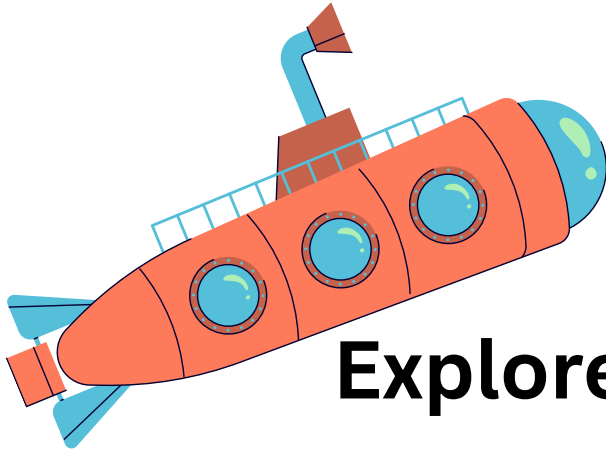
The Abyss



Creature Name:



Special adaptations



Explore at home:

The year 3025...

Technology has advanced and we are now able to explore the abyss in specially adapted submarines.

In addition to technological advances humans have evolved to be able to adapt their bodies to suit their environment - but only in emergencies.

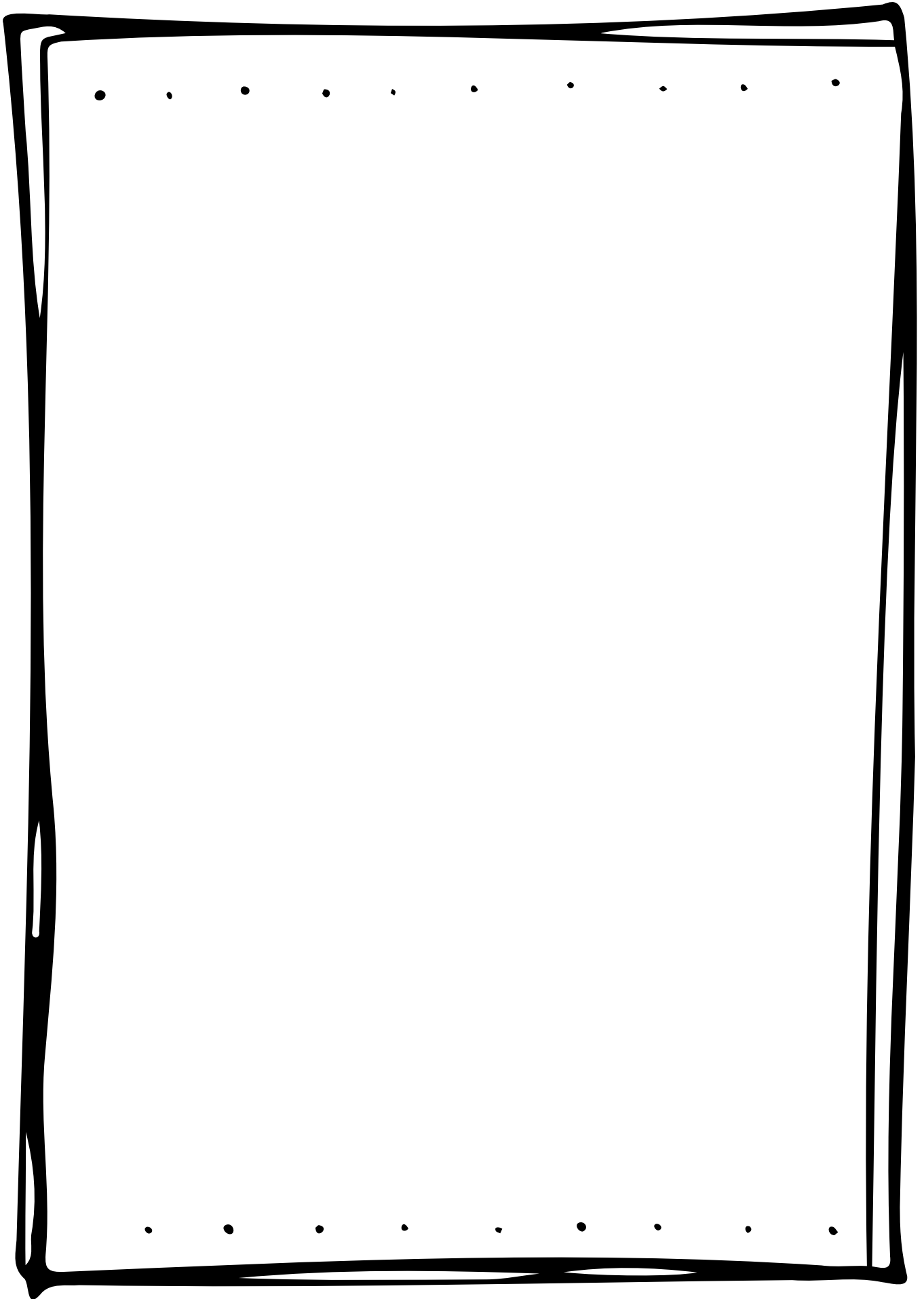
You are on a solo expedition to the abyss! Unfortunately your submarine has broken down!!

A rescue team has been dispatched however for your urgent survival you need to adapt to your environment!

How will you adapt your body to survive in THE ABYSS!

Use the space to draw or write about how you would adapt your body!

Joyfulmathswithruth



Joyfulmathswithruth