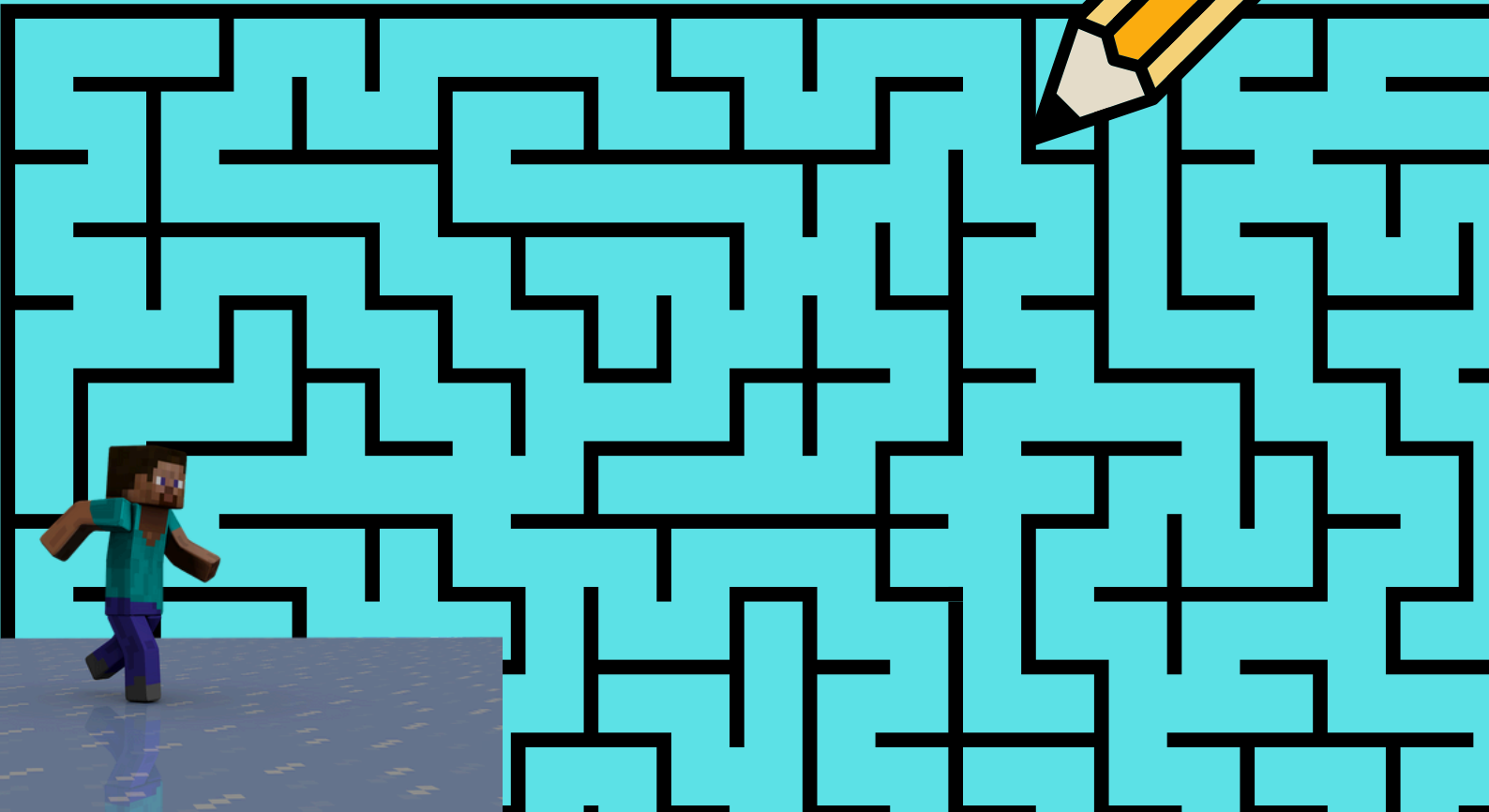
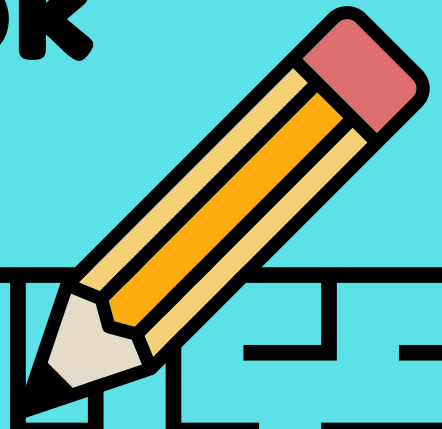


# Maths In Motion

## MINECRAFT

# Workbook

Lesson 2: Mazes



# Creating a maze

## What do you need?

All you need to create your own maze is

- A start and finish
- Connect the 2 sides
- Draw in other lines but NEVER connect the 2 sides



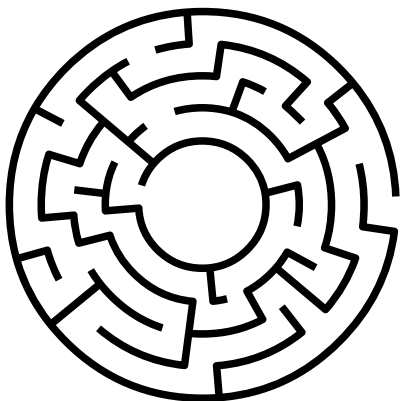
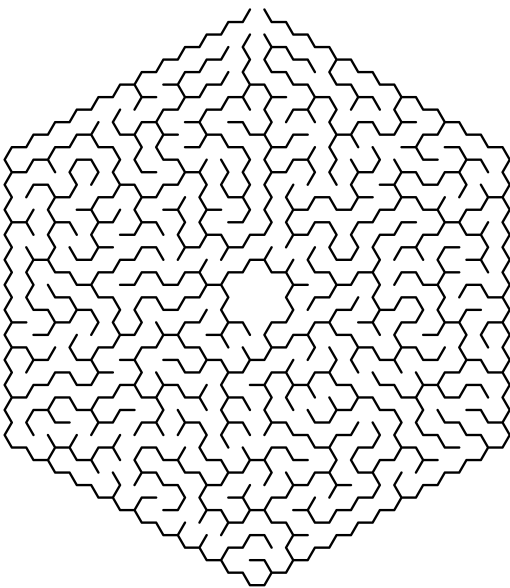
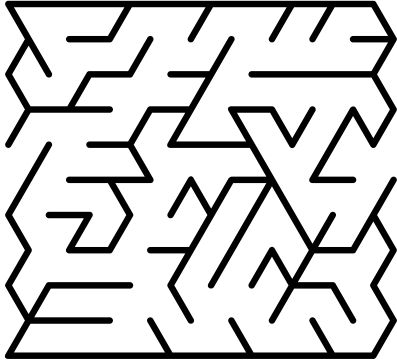
**Start**

**Finish**



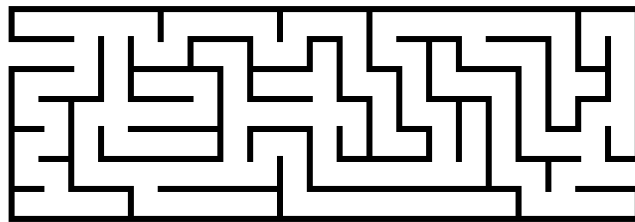
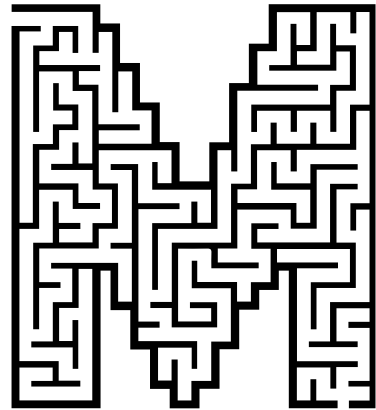
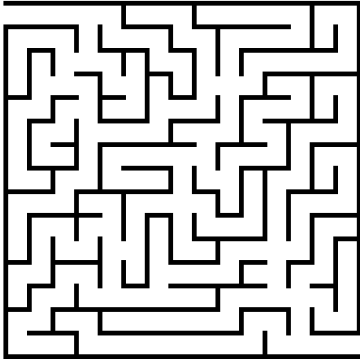
# Shape

Choosing a shape. Why would these be no good in Minecraft?

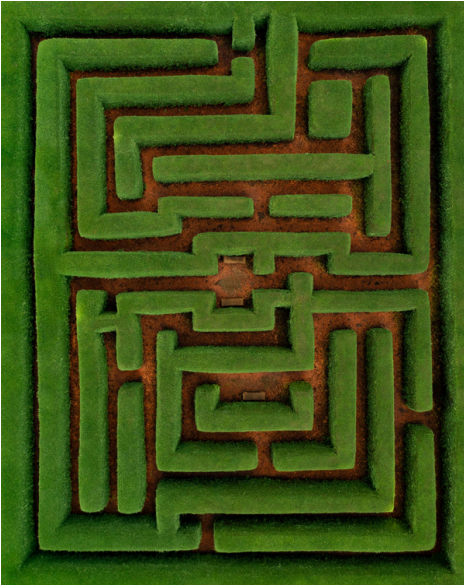


# Shape

We need squares and right angles



# 3D maze

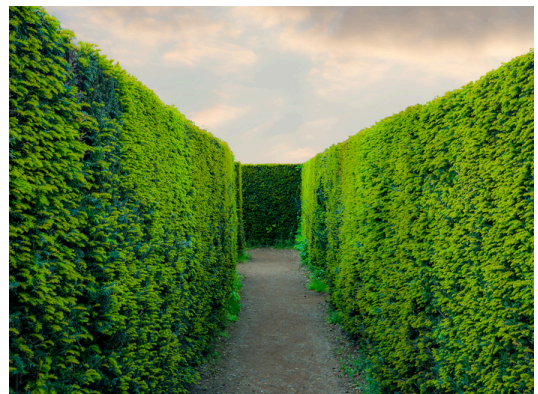


How is being inside the maze different?

**“If you choose a side, and always keep touching that side, you will reach the end of the maze”**

Does this work for your maze?

Is it the most efficient route?



# Build it out of lego/cushions/scarves?



Put a photo here



Joyfulmathswithruth

# Minecraft challenge:

## Build your own Minecraft Maze

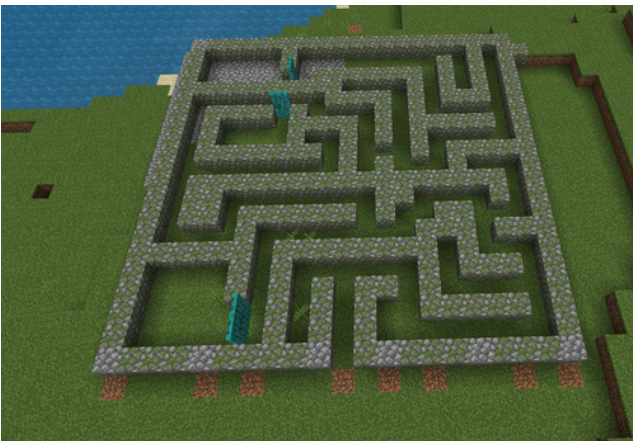
This is how me and my son did ours:



Find a flat bit of land.  
Choose a block to do  
the layout of the maze.



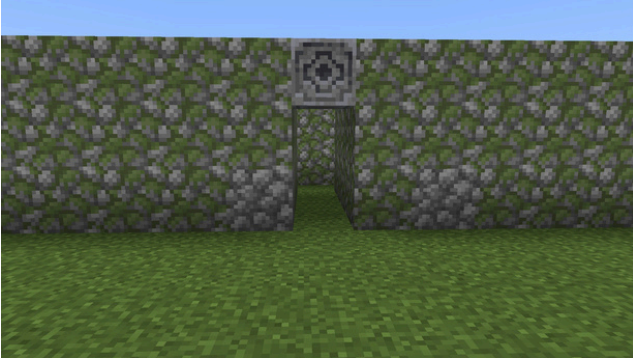
If you want your  
entrance in the centre,  
place blocks along the  
edge at equal intervals  
until the find the  
middle.



Break the extra blocks.  
Add in rooms to make it  
more interesting to  
explore.



Build up the walls. At least 3 blocks so it can't be jumped over.



Add features to make it look cool.



We added in some chests. This has armour in it. Another had ladders inside.



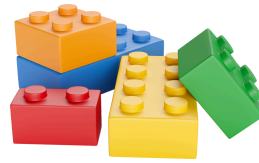
We also added a roof with a hole in it so that we could make our maze have more layers.

# Non Minecraft challenge:

## Build a marble run

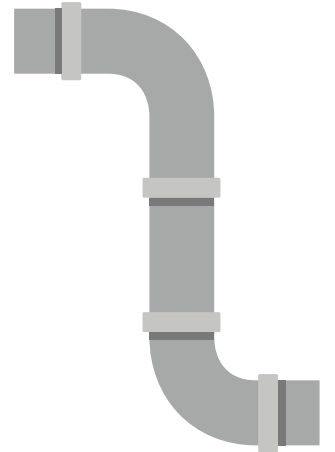


You can try using just about anything for this.



We have tried and tested using:

- Ego
- Toilet roll tubes
- Guttering



Put a photo here

